

# Community Care Hubs (CCHs) and the National DPP Lifestyle Change Program: CCH Spotlights

The National Diabetes Prevention Program (National DPP) lifestyle change program played a significant role in the development of CCHs. In 2014, the Center for Medicare and Medicaid Innovation (CMMI) funded a demonstration for the National DPP lifestyle change program in which the YMCA of the USA served as a lead organization to a delivery system of local YMCAs across the country that delivered the program. The outcome showed increased effectiveness of individual community-based organizations (CBOs) organized as a network under a single managing organization, improved health outcomes, and reduced costs.

As a result of the demonstration, Medicare established coverage for the Medicare Diabetes Prevention Program (MDPP), allowing CBOs to deliver the program as a new Medicare benefit. The history and evidence demonstrating the effectiveness of the National DPP lifestyle change program makes it a promising starting place for CCHs.

There are many examples across the country of organizations that use the CCH model to support a network of CBOs. Community Integrated Network of Oregon (CINO) is a statewide network with a CCH that supports providers in offering the National DPP lifestyle change program among other evidence-based programs.

## Community Integrated Network of Oregon (CINO)

### Background and description

CINO is a network of diverse partners focused on building the statewide infrastructure to deliver and sustain evidence-based health education programs and interventions to all adults in Oregon. The goals of the network are to increase access to evidence-based health education and care navigation to address health-related social needs (HRSN), implement closed-loop referral systems, and establish billing infrastructures. CINO is supported by two network lead organizations: Comagine Health and Oregon Wellness Network (OWN) (Figure 1). Early investments in CINO laid the foundation for the network, but its formal launch came with a 3-year (2021-2024) cooperative agreement from the Administration for Community Living (ACL). Other funding includes CDC 1705 and 2320 grants.

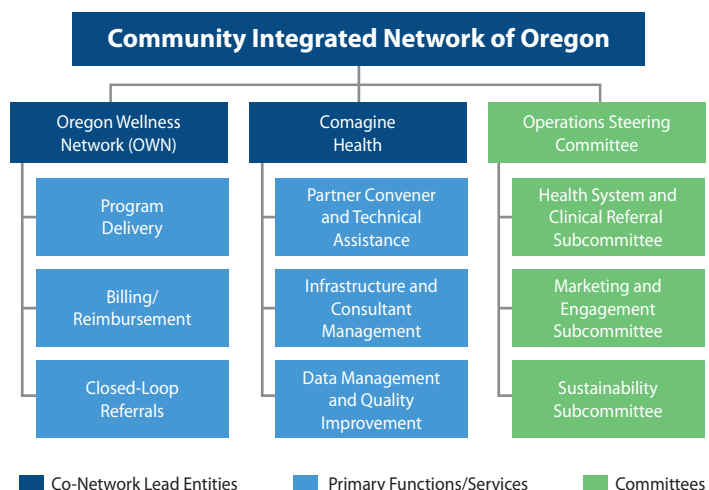
**Comagine Health** serves as the backbone entity for CINO, leading activities related to convening and coordinating network partners; providing technical assistance to support infrastructure development and quality improvement activities; consultant management; and administering the centralized data system. CINO's centralized data system streamlines data collection and enables network delivery partners to easily access reports for quality improvement, submission to CDC and other program licensing entities, and to support components of required claims documentation.

**OWN** is the network CCH and leads program delivery, billing and reimbursement, care navigation, and closed-loop referrals (Figure 2). To accomplish this body of work, Comagine Health and OWN have strong, supportive partnerships with key stakeholders across the state of Oregon (Figure 3).

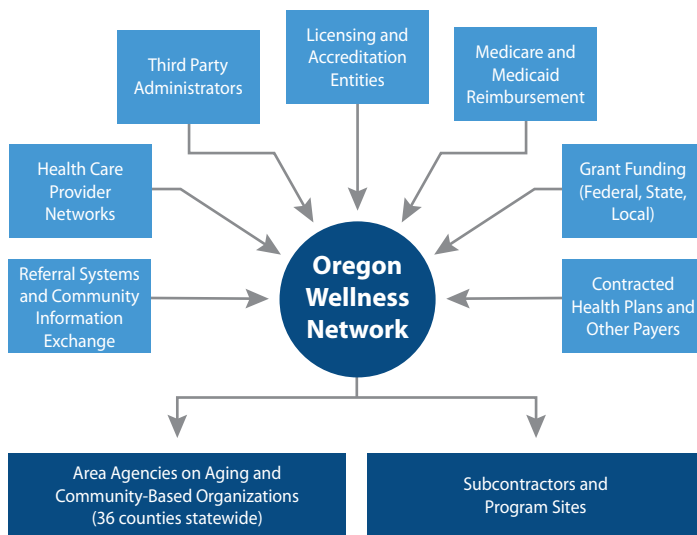
### Service delivery model

OWN and Comagine Health have a history of working together to promote and deliver the National DPP lifestyle change program, MDPP, Diabetes Self-Management Training (DSMT), and Chronic Disease Self-Management Program. With the formalization of the statewide network CINO, OWN and Comagine Health continue to expand service offerings. Current evidence-based health education programs include Living Well with Chronic Conditions, Living Well with Diabetes (DSMP), Program de Manejo Personal de la Diabetes, Tomando Control de su Salud, the National DPP lifestyle change program, MDPP, and Walk with Ease.

**Figure 1: Community Integrated Network of Oregon Operational Model**



**Figure 2: Oregon Wellness Network Hub Model**



Oregon's 1115 Medicaid waiver created a pathway for funding specific HRSN. Network partners are working to integrate the approved HRSN services into their offerings. CINO is also in the process of mapping the HRSN landscape in Oregon and exploring expanded partnerships that will be needed in the network.

To support the implementation of programs in new communities or by new delivery partners, CINO offers orientation and onboarding support to new program delivery coordinators and organizations. For organizations with existing infrastructure, program delivery support through CINO includes (1) centralized scheduling for programs across the state; (2) participant engagement, enrollment, and roster management; (3) facilitator, peer leader, and lifestyle coach training and certification; (4) advanced skills training for leaders and lifestyle coaches; (5) participation in communities of practice; (6) program licensure or recognition; (7) fidelity monitoring and quality assurance; and (8) direct contracting with coaches and leaders for program delivery.

**Figure 3: CINO Statewide Partnerships**

- Oregon Health Authority (OHA; State Public Health Department and State Medicaid)
- Oregon Area Agencies on Aging
- Oregon's Health Information Exchange (Reliance eHealth Collaborative)
- Oregon State University Cooperative Extension
- Oregon Health & Science University
- CareOregon
- Oregon Primary Care Organization
- Oregon Medical Association
- Oregon Diabetes Prevention Alignment Workgroup (DPAW) comprised of organizations seeking to align efforts and resources around diabetes prevention in Oregon.

### **Governance model**

CINO's governance model consists of the CINO Operations Steering Committee and three collaborative subcommittees (Marketing and Engagement, Health System and Clinical Referrals, and Sustainability). The Steering Committee guides the development of CINO's business plan, activities critical to sustainability, and provides overall guidance on its strategies and activities. The three subcommittees focus on strategies and activities to increase enrollment, increase referrals from health care providers, establish billing infrastructures, and develop relationships with health plans and providers.

### **Role of National DPP lifestyle change program**

The National DPP lifestyle change program is a Medicaid covered benefit in Oregon under the state's 1115 waiver. This policy opportunity positioned OWN to be able to contract with Medicaid managed care organizations (MCOs), which led to conversations about providing other evidence-based programs and services as a network hub to the MCOs' members.